



# UGP100053

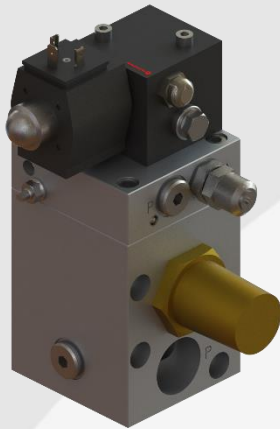
**UNITEQ BV**

Oude Graaf 18, 6002 NL, Netherlands  
T. +31 495 52 45 65  
E. sales@uniteq.nl

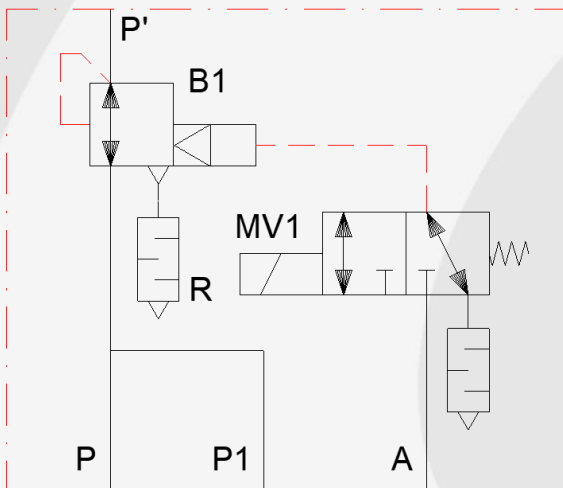
Version 2023.v00 EN

## Booster Relay with integrated quick open/close function

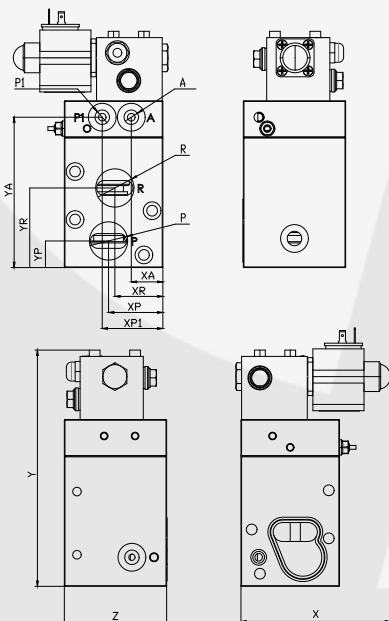
### Image



### Symbol



### Drawing



### Technical features

- Suitable for double (DA) and single acting (SA) actuator.
- Function is to help accelerate actuation speed considerably.
- Quick open and or close and or hold function integrated
- Mounting options are in pipe or directly to the UniteQ UGP manifold.
- Linearity within  $\pm 1\%$  / Hysteresis within 1% Pressure ratio 1:1
- SIL2 certified according to IEC 61508
- Operation pressure 0...10 bar (0...145psi)
- Operation temperature  $-25^{\circ}\text{C}$   $-13^{\circ}\text{F}$  /  $+70^{\circ}\text{C}$   $+158^{\circ}\text{F}$
- Supplied medium air, filtered non-lubricated and dry
- ATEX (Exd or Exe) implementation suitable

### Technical data

#### Sizes & selection

P/R	Port size		Max flow			Model
	P1	A	ltr/min	CV	(kg)	
G1	G1/4	G1/4		8	4,2	UGP100053

#### Configuration

Function Boost and quick O/C (1x NC "MV1")

#### Connections

Port (P) main supply connection  
 Port (A) external supply solenoid valve  
 Port (P') supply to actuating  
 Port (P1) external supply to positioner  
 Port (R) release

#### Electric

Power consumption solenoid valve (MV1):  
 16.9 W, 24 VDC, 703 mA, IP65.  
 17.3 VA, 230 VAC, 75 mA, IP67.

#### Order codes:

UGP100053-24VDC or UGP100053-230VAC

### Sizes

#### Dimensions

P	R	P1	A	X	Y	Z
G1	G1	G1/4	G1/4	118	187	81
YA	YR	YP	XA	XR	XP	XP1
119	63	21	25	38	43	48

#### Support connection manifold

2 times holes M8, depth 12mm

#### Material

Housing Aluminium anodize  
 Internal parts Stainless steel, Brass, POM  
 Seals NBR / PUR